

Two Story

Base Price: \$786,000

Square Footage: 4133 +/-

Bedrooms: 4

Bathrooms: 4.5



Elevation A



Elevation B



Elevation C



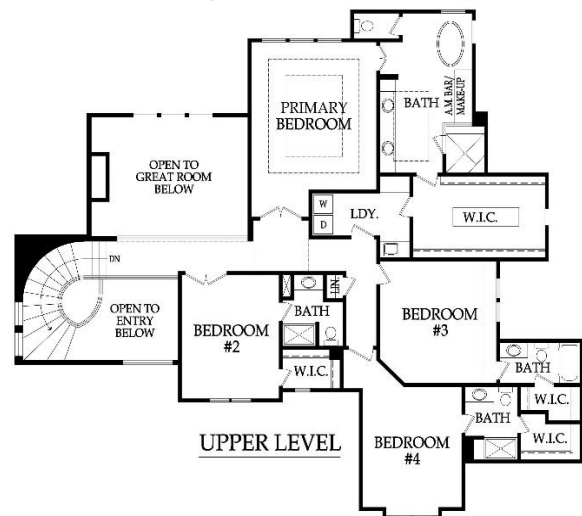
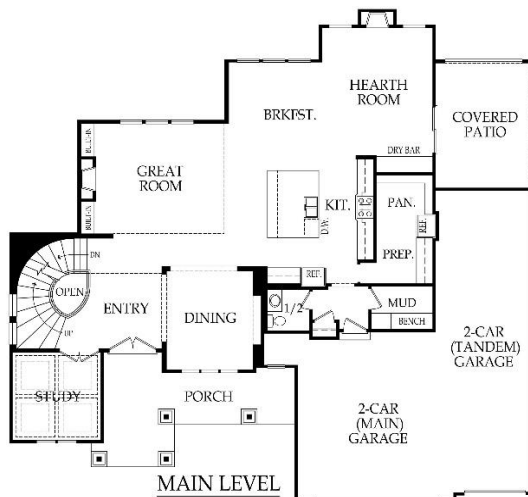
Elevation D



Elevation E



Elevation F



*Standard Features & price are subject to change. Artist rendering may differ from actual plans and show upgrades. Base price doesn't include price of homesite, city, or subdivision requirements. Square footage is estimated.

Updated 3/1/2024



Coronado

Standard Features*

APPLIANCES

Stainless steel 36" gas cooktop, hood liner, 30" built-in oven, dishwasher & built-in microwave

CABINETS & COUNTERTOPS

Kitchen cabinets with 3" drawer pulls, knobs for doors

Kitchen cabinets with hidden hinges & soft close drawers. Standard wood choices are clear alder, knotty alder or birch

Group 1 Granite or Quartz tops for kitchen island & surround, pantry, primary bath, & 1/2 bath

Cultured marble tops with integrated oval sinks in all baths

Secondary baths include paint grade vanities

Stained vanity cabinets in primary bath with separate makeup vanity/AM bar

Paint grade cabinet with sink & Group 1 Granite or Quartz top in laundry

Pantry with shelving, upper cabinets, lower cabinets with group 1 granite quartz countertops, & openings for oven & fridge

ELECTRICAL/LOW VOLTAGE

Pre-wired for ceiling fan in great room & all bedrooms

Pre-wired for under cabinet lights in kitchen

Carbon monoxide detector

4 CAT6 Data & 2 Cable/CAT6 Data (dual drops)

HEATING & AIR CONDITIONING

Passive radon vent with outlet in attic for future finish

Two 96% single speed furnaces & two 16 SEER A/C with WiFi thermostat

Two built-in humidifiers

HVAC ductwork professionally cleaned prior to closing

PAINT

Interior: 2 flat wall colors, 1 trim color & 1 stain color

Exterior: 1 body color, 1 trim color & 1 accent color. Soffits painted same color as trim

FLOORING

Prefinished engineered hardwoods: entry, kitchen, pantry, mudroom, hallway to kitchen, 1/2 bath, breakfast, hearth room, & laundry room

Carpet: office, great room, bedrooms & stairs

Tile flooring: primary bath & secondary bathrooms

WINDOWS & DOORS

8' tall entry door

Interior doors: paint grade hollow core - 8' main level, 6' 8" upper level

White or tan vinyl double-pane windows with low-e glass

EXTERIOR & INSULATION

30-year composition roof; color to be weathered wood

R-15 wall & R-50 attic insulation

4 car garage with clear span garage beam

2 chain drive garage door openers, 2 remotes & 1 exterior key pad

2 exterior hose bibs & exterior electrical outlets per code

Stucco or lap siding front with stone accent per elevation

3 sided LP SmartSide® siding

Approx. 9' foot foundation walls (not ceiling height)

8' tall insulated trim applied steel garage doors

Approx. 12' x 17' covered concrete patio

FIREPLACE, TRIM & MIRRORS

Staircase has stained handrail & iron balusters with maple end caps

Plate glass mirrors in secondary baths

Frameless shower door in primary bath & chrome shower door frame for secondary bath showers

Direct vent gas fireplace with floor to mantle tile or stone in great room & floor to ceiling tile or stone in hearth room

Trim wrapped mirror in 1/2 bath

Mudroom with paint grade boot bench

PLUMBING

Chrome plumbing fixtures

9" deep undermount stainless steel kitchen sink with garbage disposal

Ice maker line is included for kitchen fridge

50 gallon water heater

Primary bath: free-standing soaker tub, shower head & rain shower head

3/4 bath & bar stubs in basement

Professionally inspect plumbing drain lines at closing

STANDARD ALLOWANCES

Appliances: \$4,575

Lighting: \$4,000

Landscape: \$2,000

Tile: Standard + \$500 additional

Carpet: Standard + \$1,000 additional

Sod: Up to 12,000 Sq. Ft. lot

Commission: Homesite up to \$125,000

Site Cost: \$7,000

RODROCK CUSTOM EXPERIENCE

The Rodrock team provides a personal touch from start to finish. Project Managers are with you during the entire building process, including a final walkthrough of your home before closing. You will receive one-on-one time with our Interior Designers to reflect your individual style in your new home. Your Builder Liaison is available to answer any questions you have along the way.

RodrockHomes.com

913-851-0347

*Standard Features subject to change. All dimensions are approximate.

Updated 3/1/2024

